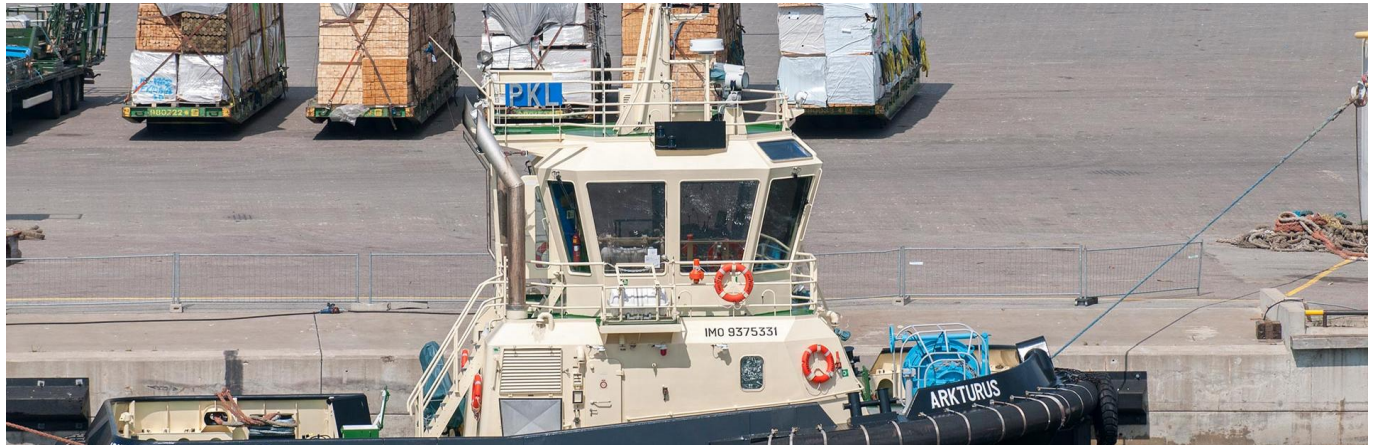


Arkturus



BHP	2 850
Bollard pull	35 tons
Speed	11,5 knots
Call sign	ES2642
IMO	9375331
Classification	RINA

Dimensions

LOA	19,00 m
Breadth	9,00 m
Draft max.	
GRT	144
NRT	44

Propulsion system

Main engine	2 x Caterpillar 3512 B
Total power	2 850 bhp

Bowthruster and sternthruster

Deck layout

Towing/AH winch	Rolls-Royce, 105 t.
Towing cable	44 mm Marlow Steelite rope, 200m
Deck crane	Palfinger PC2300M 2.1 t/m
Shark jaws/stern roller	

Vessel contact information

Email	tug.arkturus@alfonshakans.com
--------------	--

