

Iso-Pukki



BHP	2 000
Bollard pull	20 tons
Speed	12,5 knots
Call sign	OGVG
IMO	6818863
Classification	Finnish Transport Safety Agency

Dimensions

LOA	30,50 m
Breadth	9,03 m
Draft max.	
GRT	264
NRT	88

Propulsion system

Main engine	2 x Wärtsilä 814 TK
Total power	2 000 bhp diesel electric

Bowthruster and sternthruster

Brunvoll 360 bhp

Deck layout

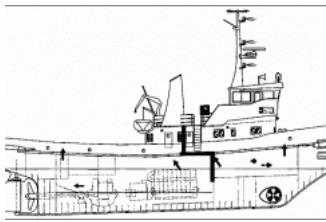
Towing/AH winch	Lidan 15 ton
Towing cable	
Deck crane	
Shark jaws/stern roller	

Vessel contact information

Email	tug.isopukki@alfonshakans.fi
--------------	--



Iso-Pukki



Alfons Håkans
VAT: FI26228329
Hevoskarintie 23, 20100 Turku
office.turku@alfonshakans.com

Alfons Hakans AS
EE100052275
Ahtri 6A, 10151 Tallinn
Tel: +372 6 116 190
office.tallinn@alfonshakans.com

PKL Flote AS
VAT LV40003643581
Tvaika 37a, Rīga LV-1034, Latvia
Tel: +371 67391290 (secretary)
Fax: +371 67341199
info@pkl.lv

PKL Latvia SIA
VAT LV40103528200
Tvaika 37a, Rīga LV-1034, Latvia
Tel: +371 29473588
Fax: +371 673341199
latvia@pkltugs.com